

MONTHLY MEMBERSHIP PROGRESS REPORT

LOCATION ILLINOIS

District 1 J

Results as of: 5/31/2023

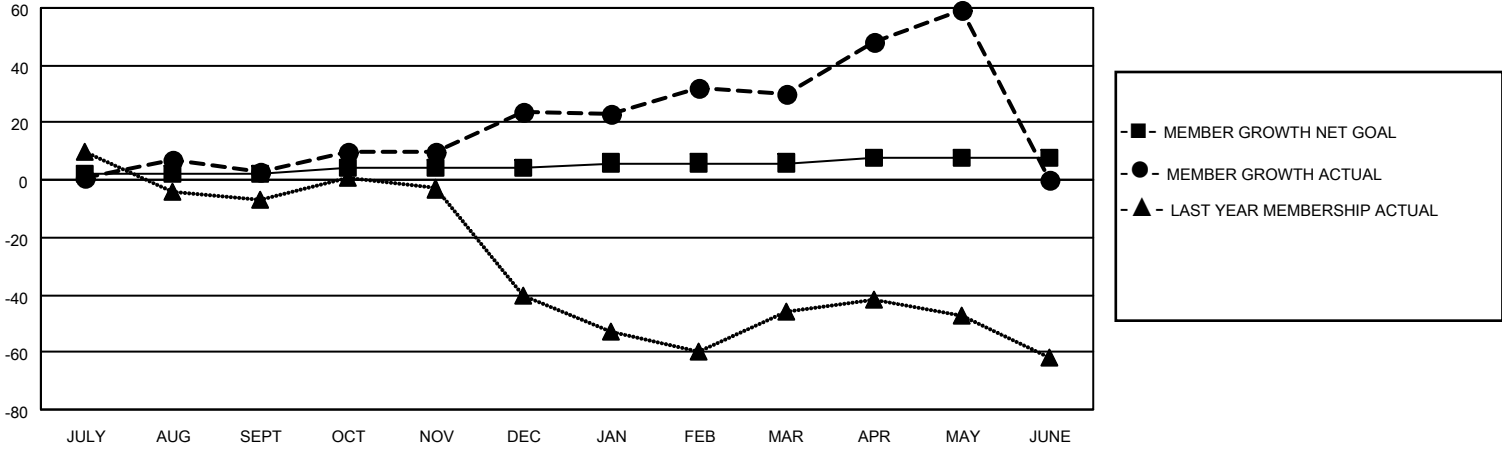
Clubs			
RESULTS FOR 2022-2023			
QUARTER	NEW CLUB GOAL	NEW CLUBS	DROPPED CLUBS
JULY/AUG/SEPT	1	0	0
OCT/NOV/DEC	1	0	0
JAN/FEB/MAR	1	0	0
APR/MAY/JUNE	1	0	0

Members			
RESULTS FOR 2022-2023			
QUARTER	MEMBER GROWTH NET GOAL	MEMBER GROWTH ACTUAL	DROPPED MEMBERS ACTUAL (including transfers)
JULY/AUG/SEPT	2	44	37
OCT/NOV/DEC	2	49	28
JAN/FEB/MAR	2	56	46
APR/MAY/JUNE	2	60	26

GOALS AND ACTUAL NEW CLUBS CUMULATIVE



GOALS AND ACTUAL MEMBERS CUMULATIVE



DROPPED CLUBS: 0	
<u>DROPPED MEMBERS</u>	
DECEASED	24
CLUB CANCELLED	0
OTHER	113
TOTAL	137

42 CLUBS OF 56 ADDED 1 OR MORE NEW MEMBERS

[CLICK HERE FOR CUMULATIVE MEMBERSHIP DATA](#)

<u>GENDER DISTRIBUTION</u>	
MALE	1,535 (73.76%)
FEMALE	545 (26.19%)
NON BINARY	0 (0.00%)
PREFER NOT TO ANSWER	1 (0.05%)
TOTAL FAMILY UNIT MEMBERS	
	204
FAMILY MEMBERS PAYING HALF DUES	
	107